

PARK STRATEGIES

Parks Strategy #1: Complete a parks needs analysis to make sure the community needs are being met

- Use NRPA Standards for facilities and parkland
- Develop strategies for addressing deficiencies
- Complete a facility analysis for the McCreary Center (See Public Facilities Chapter)
- Make walkability an important part of the park system planning
- Distribute park facilities to provide equitable access for all community members

Parks Strategy #2: Develop a Soccer Facility

- Identify location (Pattee Park as designed with the campground plan or in a new location)
- Secure funding for capital and operations costs

Parks Strategy #3: Support an "action" outdoor recreation park

- Identify a location with topography, varied and interesting landscape, and water access
- Work with national/regional associations
 - » International Mountain Bicycling Association (IMBA)
 - » Professional Ropes Course Association (PRCA)
 - » Outdoor Industry Association (OIA)

Parks Strategy #4: Develop neighborhood parks

- Identify residential locations for parks to serve neighborhoods
- Provide facilities that serve neighborhood interests
 - » Playgrounds
 - » Open field playspace
 - » Picnic space
- Incorporate special facilities
 - » Art display space
 - » Historical interpretation

Parks Strategy #5: Incorporate parks as part of the greenway system

- Ensure access to natural areas
- Provide passive recreation park space for
 - » Hiking
 - » Bird Watching
 - » Plant Walks
 - » Resting
 - » Fishing

outdoor waterpark



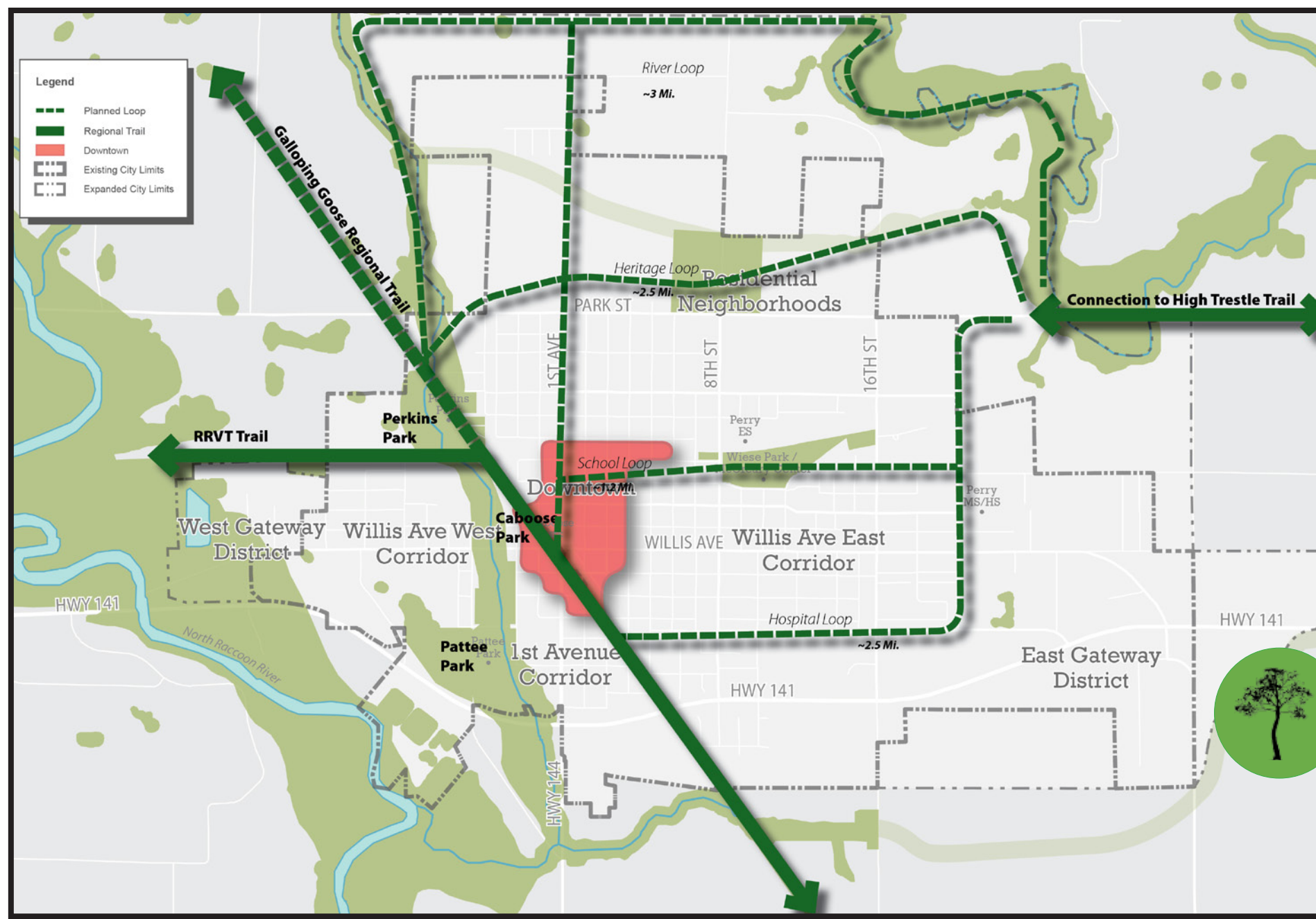
Work to provide parks that are walkable from all neighborhoods in Perry



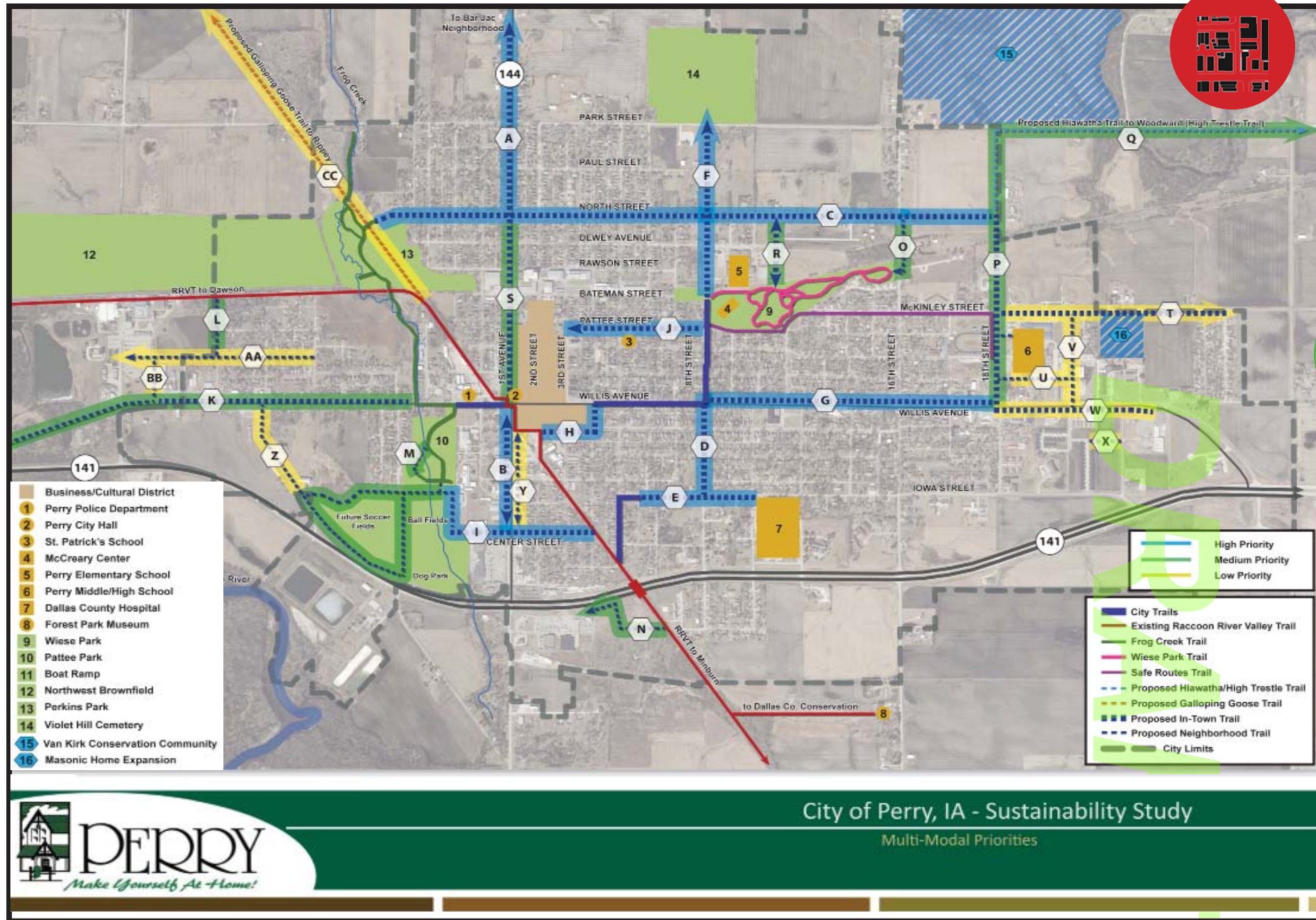
Build high quality soccer fields to address strong demand



Action sports and activities would help Perry's identity as a destination for outdoor enthusiasts



Develop loop trails in distinct, series of walks or rides



Connect the community using sidewalks and trails



Incorporate wayfinding into the trails system

TRAIL STRATEGIES

Trails Strategy #1: Develop a loop system in the city that connects the regional trails and provides a series of varied experiences for local riders.

- Connect destinations such as schools, parks, downtown, and historic/cultural features
- Provide a wayfinding system that uses distinct branding and clear directions to destinations
- Secure right of way or easements
- Make a future connection to the High Trestle Trail

Trails Strategy #2: Implement the comprehensive local trail network identified in the Perry Sustainability Plan

- Connect neighborhoods to the greater trail network
- Improve sidewalks where broken or where there are sidewalk gaps

Trails Strategy #3: Implement improvements to trails and road crossings as identified in the Iowa Living Roadways Plan

- Improve crossing at Hwy 141 – Pursue a grade separated crossing
- Improve crossing at First Avenue
 - » Paint trail crossing
 - » Provide additional signage at crossing
 - » Install heightened landscaping at key intersections
- Install landscape features to improve trail user experiences

Trails Strategy #4: Expand wayfinding strategy from Iowa Living Roadways Plan

- Create strong connections between regional trails
- Use wayfinding to bring trail users to downtown Perry
- Incorporate technology such as QR codes into wayfinding
- Make art a part of the trails network, as a linear outdoor gallery

DRAFT JUNE 2013

PARKS AND TRAILS