

GOALS

Goal #1: Provide safe, clean drinking water by protecting groundwater aquifers from contamination, treating drinking water, and protecting treated drinking water during distribution in order to minimize individual and widespread health risks.

- Implement strategies detailed in the current Wellhead Protection (WHP) program to create awareness of groundwater protection and prevent contamination of groundwater supplies.
- Implement strategies detailed in the current Wellhead Protection (WHP) program to align well fields with open space, greenways, or park and recreation uses to better control land use to minimize threats to groundwater sources.

Goal #2: Ensure Reliable and Efficient Water Supply

- Evaluate effectiveness of decommissioning existing low volume wells and replacing them with higher volume wells in the well field located at Highway 141 and Highway 169.
- Manage demand (daily usage) by implementing strategies for efficient or reduced water use.
- Construct additional elevated storage to meet IDNR requirements that storage capacity be no less than the daily usage. (The elevated towers are deficient as they provide storage of 0.50 MG and daily average use is 1.00 MG.)

Goal #3: Ensure Reliable Water Supply for Fire Flow Requirements

- Provide upgrades to the distribution system to ensure reliable and efficient water supply and compliance with fire protection requirements.
- Replace older and undersized mains as part of reconstruction projects, water main breaks, or customer complaints related to flow or water main pressure.

Goal #4: Prevent localized flood damage – The City will reduce the potential for recurring flood damage resulting from lack of storm water infrastructure and address increased flood risk associated with future development.

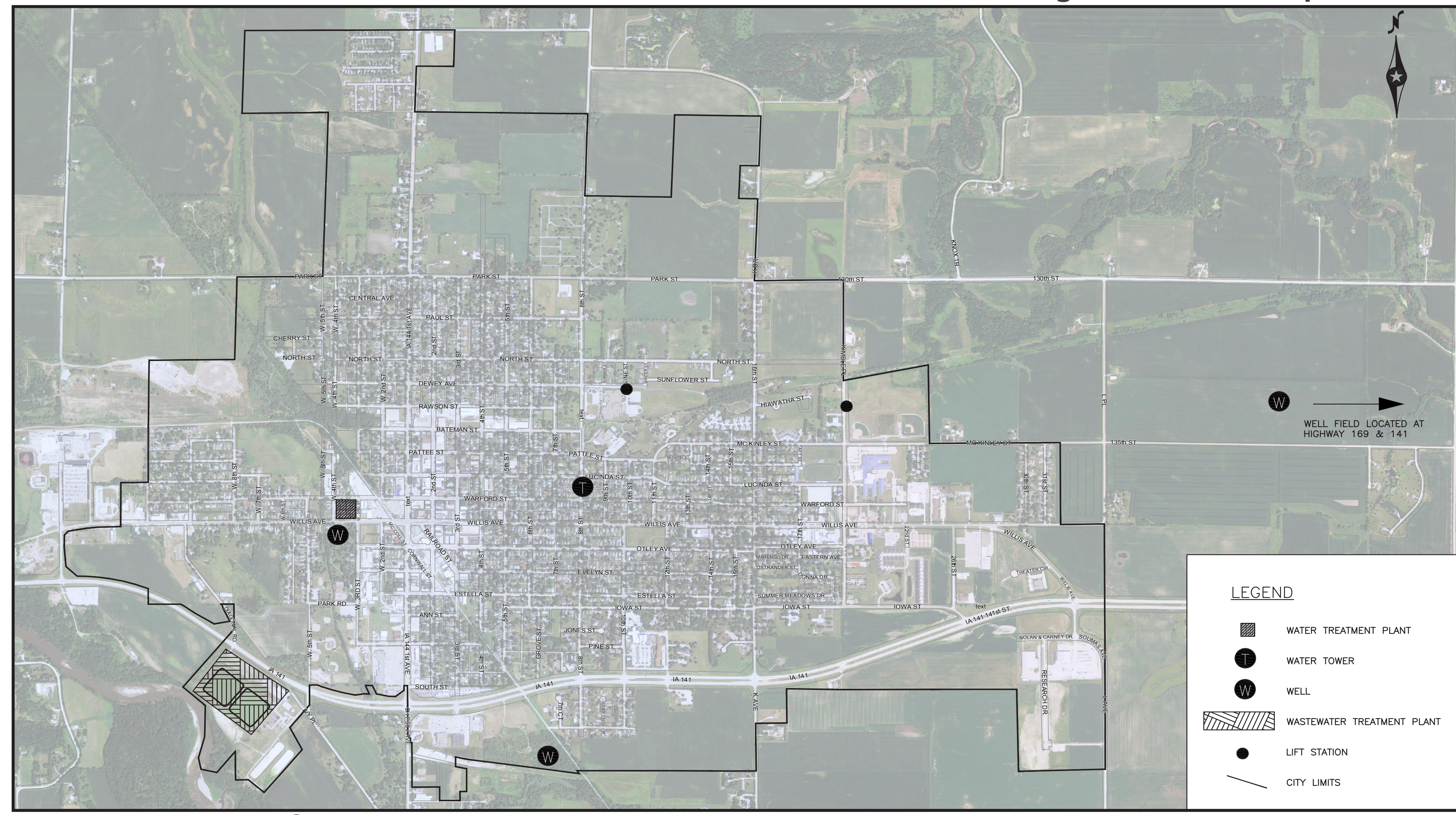
- Establish the 100-year storm event as the minimum benchmark for assessing flood control measures and the 10-year storm event as the minimum benchmark for new storm sewer conveyance.
- Require post-development flow and volume from storm water runoff to not exceed pre-development (existing) flow and volume for all new development and redevelopments.



Develop maintenance and inspection programs for City-owned storm water treatment facilities



Implement strategies detailed in the current Wellhead Protection program to create awareness of groundwater protection



Perry's Existing Infrastructure



Support stormwater management strategies that: reduce runoff, recycles stormwater for irrigation, treats it before entering surface waters, and enhances the appearance of the community



Manage demand by implementing strategies for efficient or reduced water use

GOALS

Goal #5: Prevent damage to surface water quality – The City will reduce the potential for recurring surface water quality damage to natural resources and avoid further environmental degradation associated with future development.

- Use and preserve natural features for water storage, retention, and conveyance.
- Restrict the use of lawn fertilizers containing phosphates except in the cases of establishing new lawns.

Goal #6: Manage Watersheds Cooperatively – The City will partner and collaborate planning, monitoring, and enforcement activities with applicable local (Dallas County), state (IDNR, Iowa Department of Agriculture and Land Stewardship), and federal (FEMA, USGS, EPA) agencies interested in the same.

- Develop maintenance and inspection programs for City-owned storm water treatment facilities. Require privately-owned storm water treatment facilities to be routinely maintained and inspected by private owner.
- Sustain or improve the City's current rating with FEMA's National Flood Insurance Program.
- Collaborate with property owners/developers to coordinate regional storm water facilities, such as storm water ponds, for larger development or public works projects where on-site storage and treatment is not practical.

Goal #7: Provide for the safe treatment of wastewater.

- Treat and monitor collected wastewater/sewage to meet or exceed all regulatory rules, including current permit requirements for National Pollutant Discharge Elimination System (NPDES) as established by the Iowa DNR and EPA.
- Partner and collaborate waste water monitoring and planning efforts with local (Dallas County), state (IDNR), and federal (USGS, FEMA, EPA) agencies.

Goal #8: Ensure reliable and efficient wastewater collection and treatment that will meet current and future demand.

- Require all new development within the City to connect to public sanitary system. Expansion of the municipal system to serve new development in outlying areas without existing public sanitary infrastructure will be considered by the City in a fair, equitable, and cost effective manner.
- Prohibit all discharges and connections to public sanitary system associated with storm water, surface runoff, roof drainage, foundation drainage, sump pumps, cooling water, ground water, and other unpolluted water sources.

DRAFT JUNE 2013

INFRASTRUCTURE